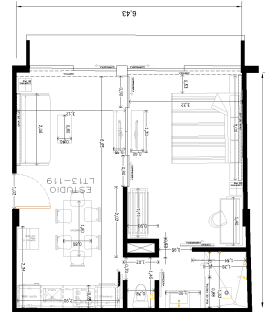




RESIDENCIA CONDOS - 1BEDROOM - OCEAN / JUNGLE VIEW - 50M2

UNIT VALUE	USD 301,600
<b>ESTIMATED R.O.I.</b>	<b>7.30%</b>
<b>T.C.</b>	<b>MEX\$ 19.00</b>



ESTIMATED RATES

SEASON	TIME FRAME	# WEEKS	\$ DAY	\$ X WEEK	RENTED WEEKS	\$ TOTAL
HOLIDAY 2020/2021	24 DIC - 2 ENE	1.28	USD 219	USD 1,533.00	1.2	USD 1,840
ALTA	3 ENE - 8 ENE	0.85	USD 189	USD 1,323.00	0.75	USD 992
HIGH	9 ENE - 23 MARZO	11	USD 180	USD 1,260.00	8.5	USD 10,710
SANTA/PASCUA (EASTER)	24 MARZO - 8 ABRIL	2	USD 169	USD 1,183.00	1.7	USD 2,011
REGULAR	9 ABRIL - 30 ABRIL 1 JUL - 31 AGOSTO 1 NOV - 23 DIC	19	USD 150	USD 1,050.00	9	USD 9,450
LOW	1 MAYO - 30 JUNIO 1 SEPT - 31 OCT.	17.87	USD 110	USD 770.00	12	USD 9,240

	<b>52</b>				<b>33.15</b>	<b>USD 34,242.95</b>
					<b>63.75%</b>	<b>OCCUPANCY</b>

INCOME	USD 34,243
25% ADMIN FEE	USD 8,561 Agency & Mkt
HOA (2.5USD X SQMT)	USD 1,650 Bulding & Amenities maintainance
PREDIAL (MX TAX)	USD 302 Anual taxes
LIGHT/INTERNET	USD 1,700 Avg. Costs

<b>TOTAL ANUAL INCOME</b>	<b>USD 22,030.61</b>
---------------------------	----------------------

NOTES:

\*This is a rental overview based on the late 2021 rates